



Mukilteo Professional Building

Retail / Office Space for Lease

Michael DeLorey
(206) 920-8855
MDeLorey@CornellandAssociates.com

Cornell & Associates, Inc. DISCLAIMER: The information contained herein has been obtained from sources believed to be reliable; however, no representations are made to its accuracy. Prospective tenants or buyers should consult their own professional advisors and conduct an independent investigation. Properties are subject to change in price and/or availability without notice.



PROPERTY INFORMATION

The Mukilteo Professional Building is an ideal location for Physical or Massage Therapy, Personal Training or Other Health Practitioners. Easy access off of Mukilteo Speedway, the location is highly visible to the street but set back and nestled among landscaping, blocking street noise and creating a serene environment.



Michael DeLorey
(206) 920-8855
MDeLorey@CornellandAssociates.com

Cornell & Associates, Inc. DISCLAIMER: The information contained herein has been obtained from sources believed to be reliable; however, no representations are made to its accuracy. Prospective tenants or buyers should consult their own professional advisors and conduct an independent investigation. Properties are subject to change in price and/or availability without notice.



LISTING INFORMATION

MUKILTEO PROFESSIONAL CENTER

8423 Mukilteo Speedway, Mukilteo, WA 98275

| AVAILABILITY | LEASE RATE | NNN |
|--------------|------------|------------------|
| Suite 101 | \$25 PSF | \$9.70 / SF / YR |

LEASE INFORMATION

| | |
|----------------------|----------------------------------|
| Usable Square Feet | 1,375 SF |
| Rentable Square Feet | 1,596 SF |
| Usage | Retail, Office, Executive Suites |
| Lease Terms | 3-10 year |
| Available Date | Now |
| Move In | 30/60 |

LOCATION

| | |
|--------------|-----------------------|
| Neighborhood | Mukilteo |
| Cross Street | 84th Street Southwest |
| Parking | 30 uncovered |



Michael DeLorey

(206) 920-8855

MDeLorey@CornellandAssociates.com

Cornell & Associates, Inc. DISCLAIMER: The information contained herein has been obtained from sources believed to be reliable; however, no representations are made to its accuracy. Prospective tenants or buyers should consult their own professional advisors and conduct an independent investigation. Properties are subject to change in price and/or availability without notice.

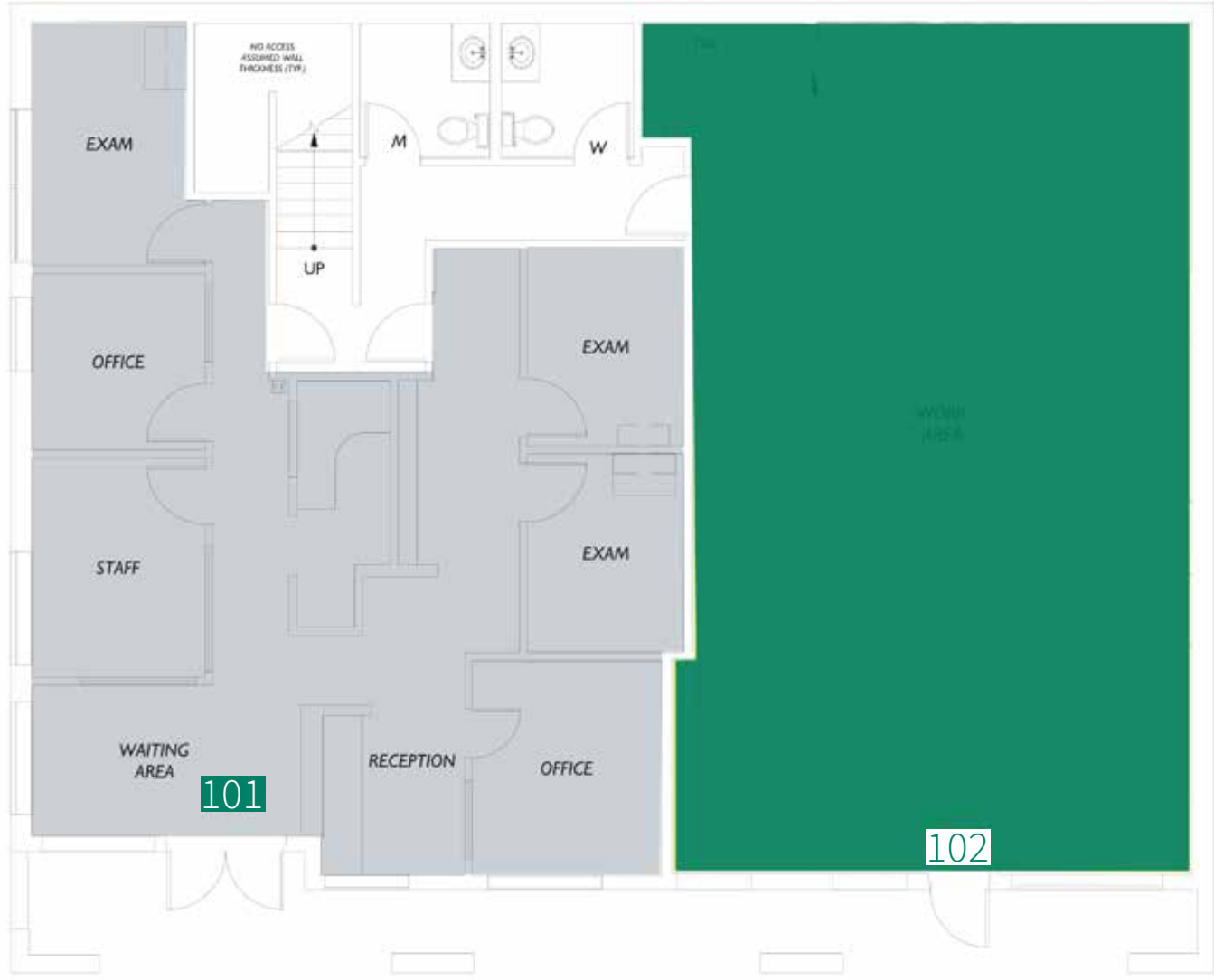


FLOOR PLAN

FIRST FLOOR

PARKING

PARKING



PARKING

MUKILTEO SPEEDWAY

SUITE INFORMATION

Retail level entrance

Corner unit

Reception area

Ideal for Physical or Massage Therapy, Personal Training or
Other Health Practitioners

Parking available

Great visibility to Mukilteo Speedway

Large lighted area for signage



Michael DeLorey

(206) 920-8855

MDeLorey@CornellandAssociates.com

Cornell & Associates, Inc. DISCLAIMER: The information contained herein has been obtained from sources believed to be reliable; however, no representations are made to its accuracy. Prospective tenants or buyers should consult their own professional advisors and conduct an independent investigation. Properties are subject to change in price and/or availability without notice.

SUITE 101



Michael DeLorey
(206) 920-8855
MDeLorey@CornellandAssociates.com

Cornell & Associates, Inc. DISCLAIMER: The information contained herein has been obtained from sources believed to be reliable; however, no representations are made to its accuracy. Prospective tenants or buyers should consult their own professional advisors and conduct an independent investigation. Properties are subject to change in price and/or availability without notice.



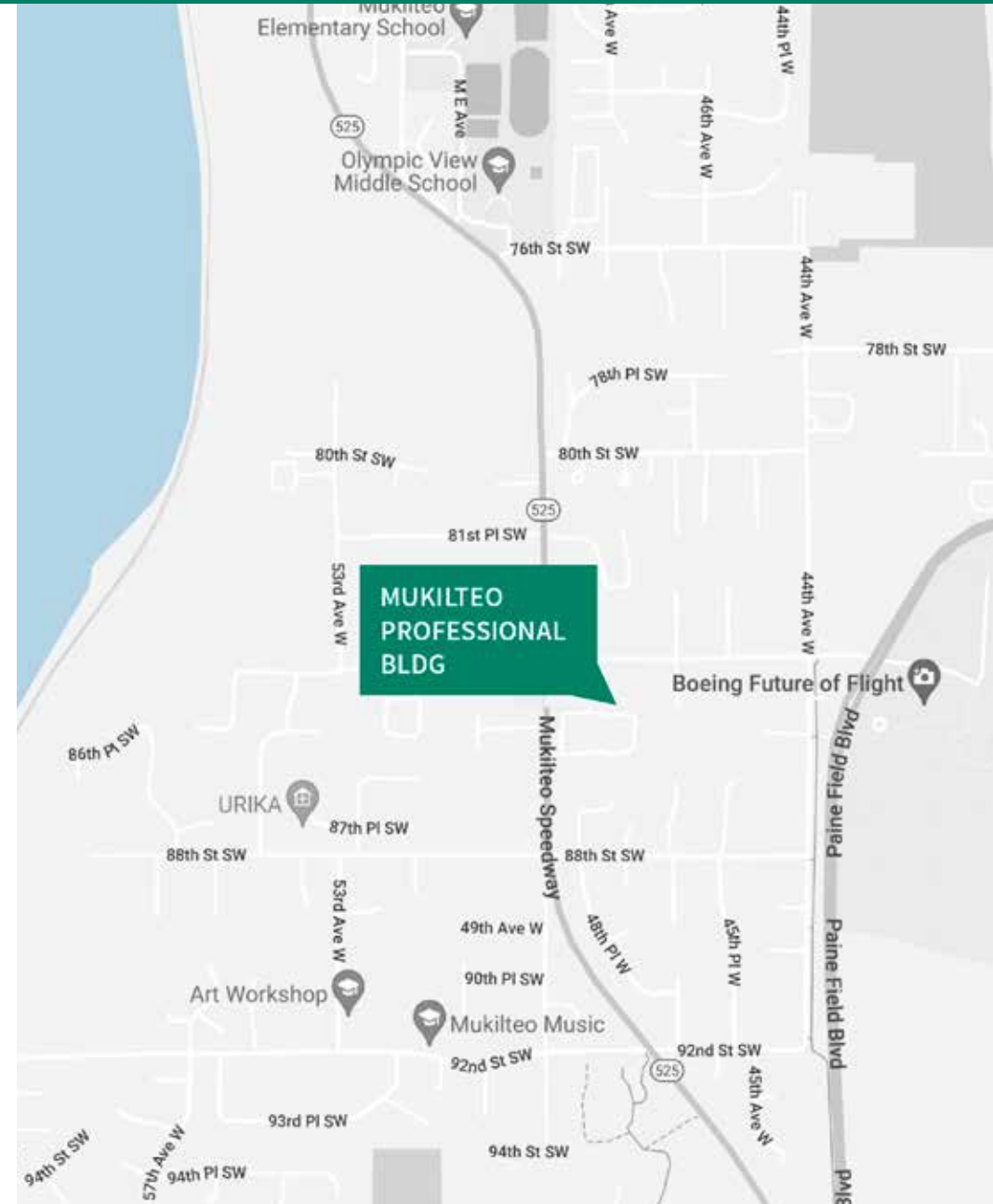
LOCATION DETAILS

MUKILTEO NEIGHBORHOOD

Mukilteo is a waterfront city in Snohomish County. It is a major transportation hub, with connections to Whidbey Island via the Washington State Ferries system, Sounder commuter trains to Seattle, and public transit services to nearby cities.

The city is recognized for its quality of life and is one of the most affluent in Washington state, with a high median income. The population was 20,254 at the 2010 census.

The waterfront's connection to the rest of Mukilteo is via the Mukilteo Speedway (State Route 525), which also serves ferry traffic.



Michael DeLorey

(206) 920-8855

MDeLorey@CornellandAssociates.com

Cornell & Associates, Inc. DISCLAIMER: The information contained herein has been obtained from sources believed to be reliable; however, no representations are made to its accuracy. Prospective tenants or buyers should consult their own professional advisors and conduct an independent investigation. Properties are subject to change in price and/or availability without notice.

